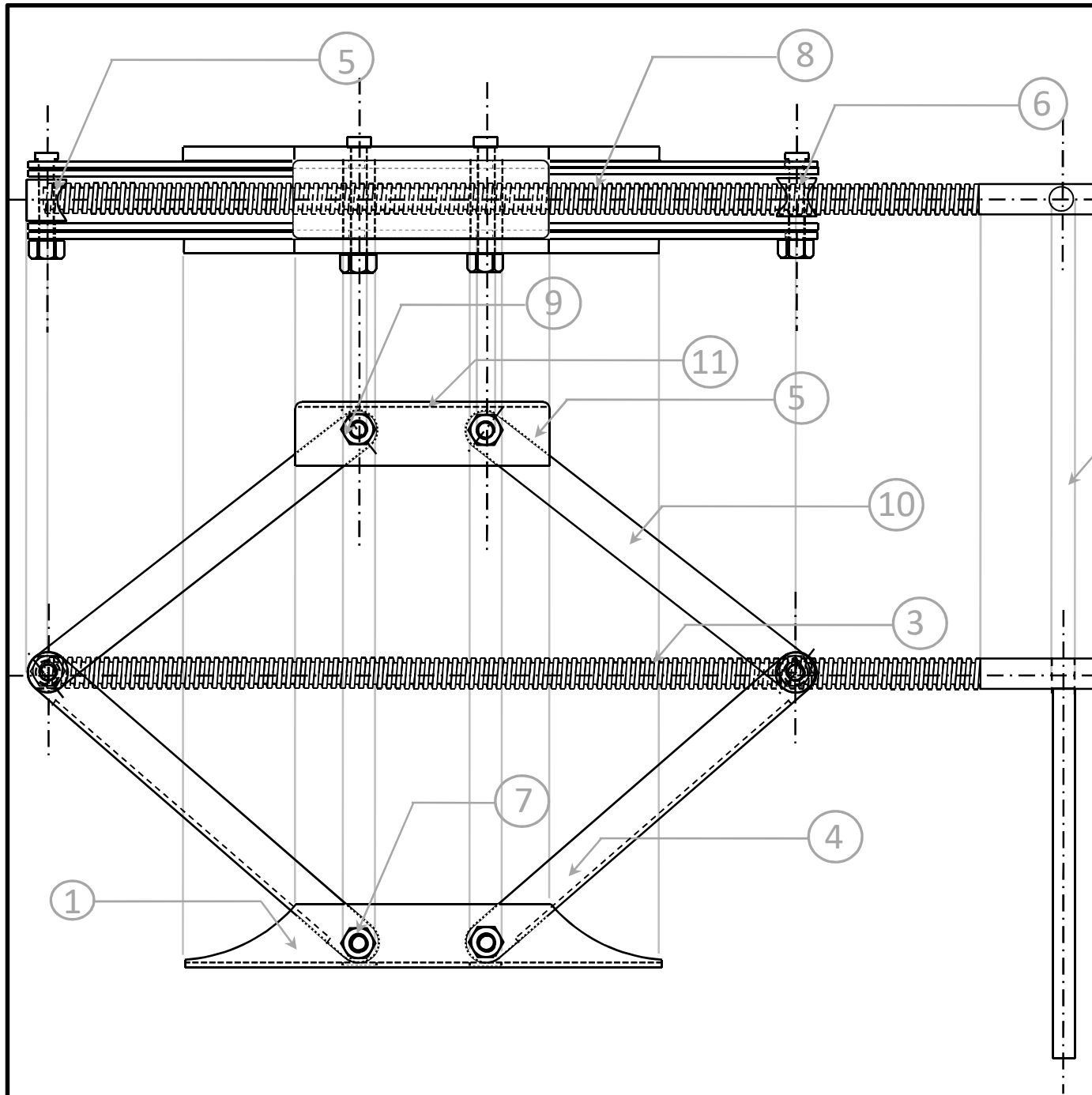


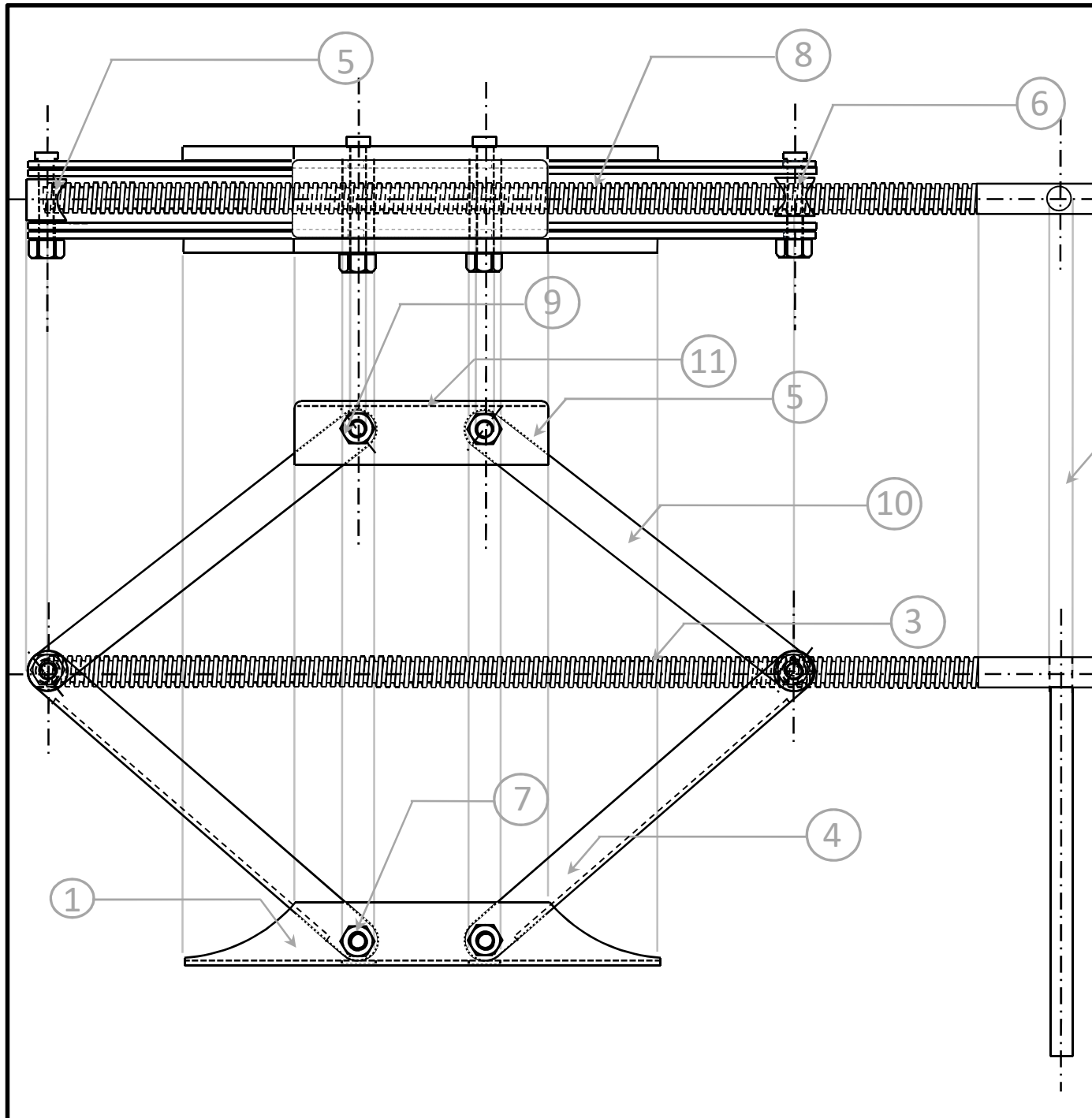
Conventions in Orthographic projections work very well in representing part drawings...



### BILL OF MATERIAL

NO	PART	MATL	QTY
1	BASE	1050 STL	1
2	HANDLE	1050 STL	1
3	LEAD SCREW	1050 STL	1
4	LOWER CHANNEL	1050 STL	2
5	SCREW RIGID CONNECTION	1050 STL	1
6	SCREW THROUGH CONNECTION	1050 STL	1
7	STANDARD M10 SCREW 2	MS	2
8	STANDARD M10 SCREW 3	MS	2
9	STANDARD NUT	MS	6
10	UPPER CHANNEL	1050 STL	4
11	UPPER DECK	1050 STL	1

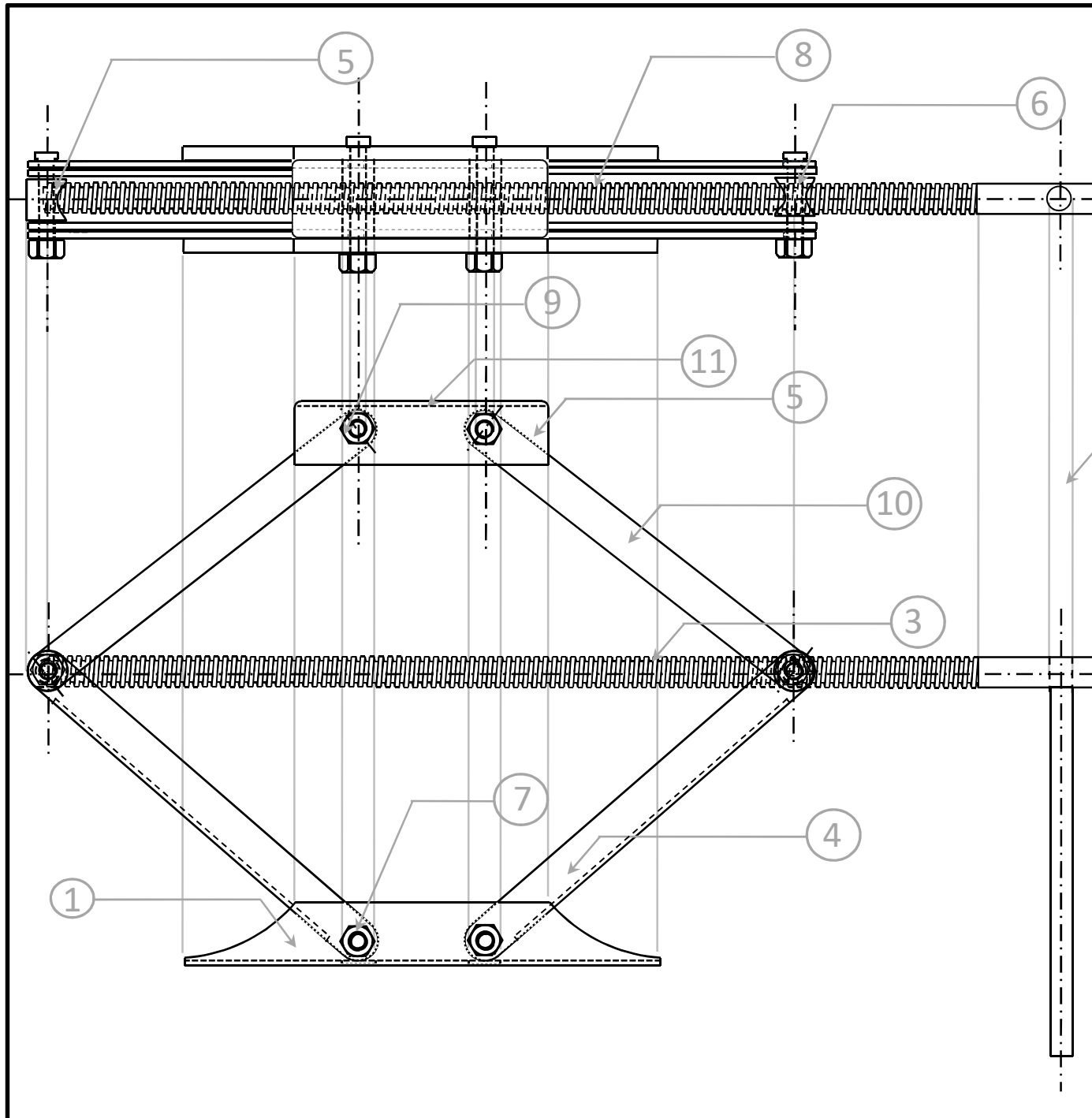
Same, when used to represent assembly drawings, may result in a great deal of **cluttering**, and result in **compromising clarity** ...



### BILL OF MATERIAL

NO	PART	MATL	QTY
1	BASE	1050 STL	1
2	HANDLE	1050 STL	1
3	LEAD SCREW	1050 STL	1
4	LOWER CHANNEL	1050 STL	2
5	SCREW RIGID CONNECTION	1050 STL	1
6	SCREW THROUGH CONNECTION	1050 STL	1
7	STANDARD M10 SCREW 2	MS	2
8	STANDARD M10 SCREW 3	MS	2
9	STANDARD NUT	MS	6
10	UPPER CHANNEL	1050 STL	4
11	UPPER DECK	1050 STL	1

One could reckon relaxing some conventions in orthographic projections to improve clarity and representation of assembly drawings ...

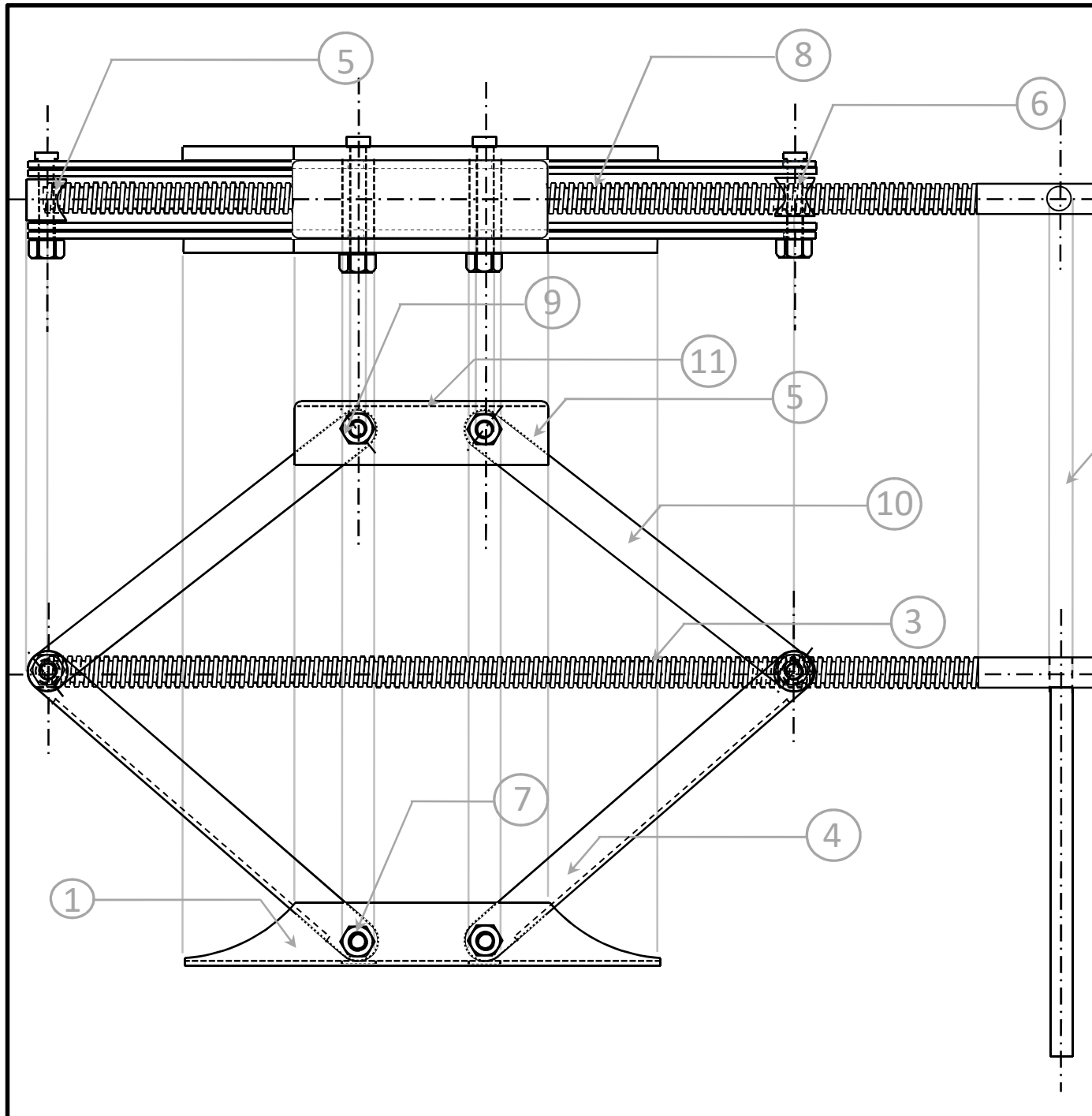


### BILL OF MATERIAL

NO	PART	MATL	QTY
1	BASE	1050 STL	1
2	HANDLE	1050 STL	1
3	LEAD SCREW	1050 STL	1
4	LOWER CHANNEL	1050 STL	2
5	SCREW RIGID CONNECTION	1050 STL	1
6	SCREW THROUGH CONNECTION	1050 STL	1
7	STANDARD M10 SCREW 2	MS	2
8	STANDARD M10 SCREW 3	MS	2
9	STANDARD NUT	MS	6
10	UPPER CHANNEL	1050 STL	4
11	UPPER DECK	1050 STL	1



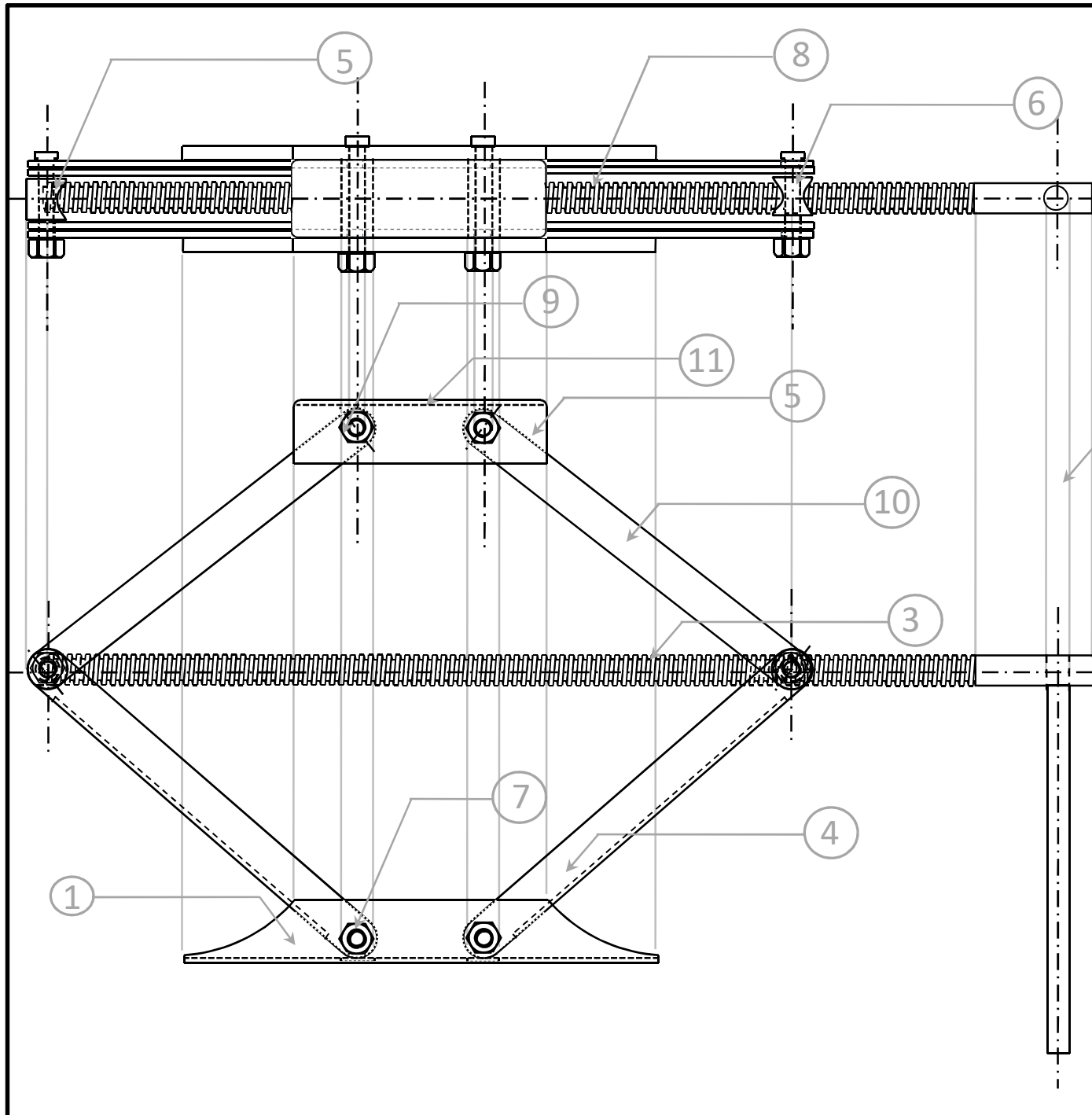
Notice removal of middle portion of lead screw in the TOP VIEW. Information is not lost (present in FRONT view) but TOP VIEW becomes relatively more clear.



### BILL OF MATERIAL

NO	PART	MATL	QTY
1	BASE	1050 STL	1
2	HANDLE	1050 STL	1
3	LEAD SCREW	1050 STL	1
4	LOWER CHANNEL	1050 STL	2
5	SCREW RIGID CONNECTION	1050 STL	1
6	SCREW THROUGH CONNECTION	1050 STL	1
7	STANDARD M10 SCREW 2	MS	2
8	STANDARD M10 SCREW 3	MS	2
9	STANDARD NUT	MS	6
10	UPPER CHANNEL	1050 STL	4
11	UPPER DECK	1050 STL	1

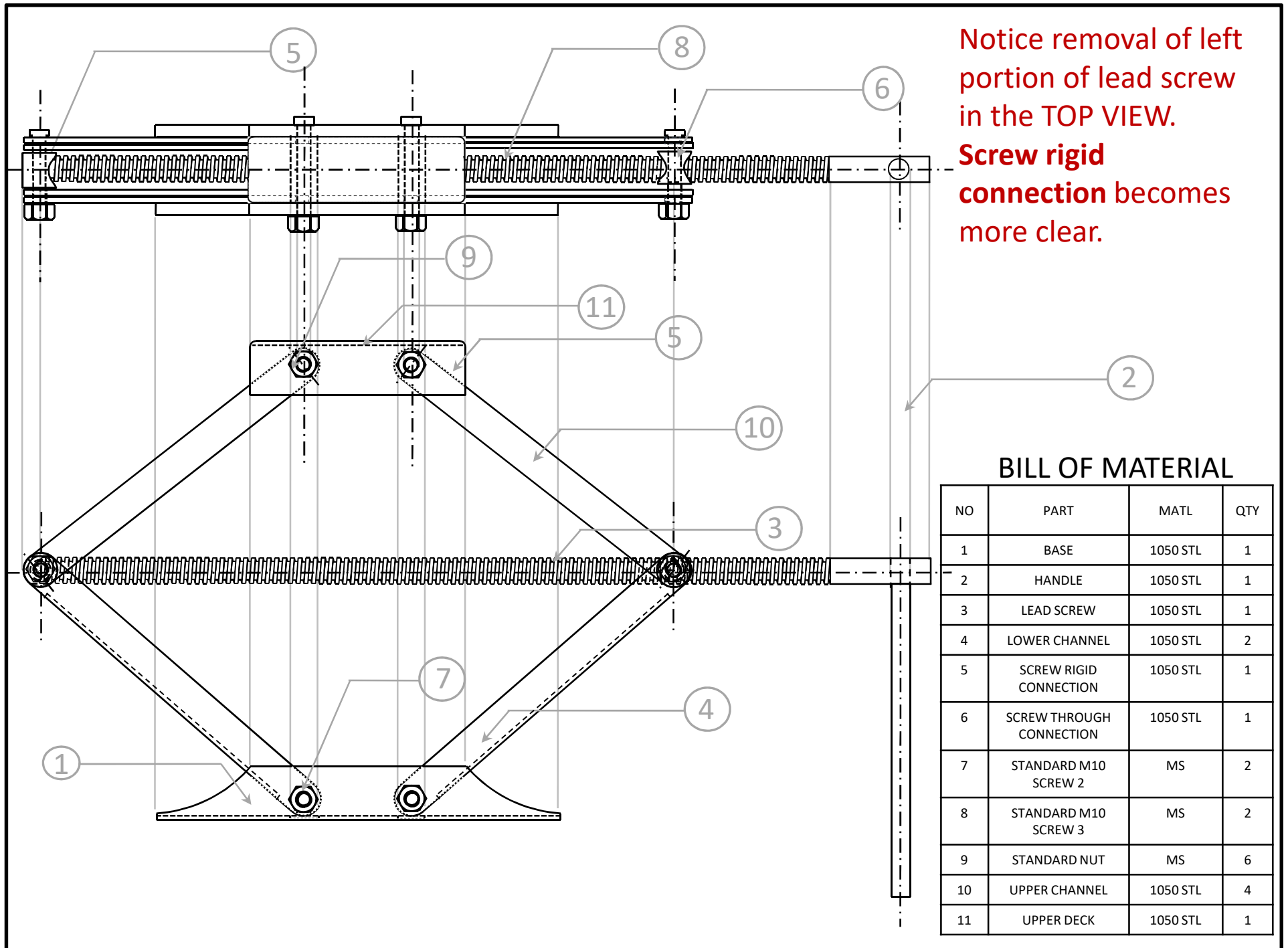
Notice removal of right portion of lead screw in the TOP VIEW. **Screw through connection** becomes more clear.



### BILL OF MATERIAL

NO	PART	MATL	QTY
1	BASE	1050 STL	1
2	HANDLE	1050 STL	1
3	LEAD SCREW	1050 STL	1
4	LOWER CHANNEL	1050 STL	2
5	SCREW RIGID CONNECTION	1050 STL	1
6	SCREW THROUGH CONNECTION	1050 STL	1
7	STANDARD M10 SCREW 2	MS	2
8	STANDARD M10 SCREW 3	MS	2
9	STANDARD NUT	MS	6
10	UPPER CHANNEL	1050 STL	4
11	UPPER DECK	1050 STL	1

Notice removal of left portion of lead screw in the TOP VIEW.  
**Screw rigid connection** becomes more clear.



### BILL OF MATERIAL

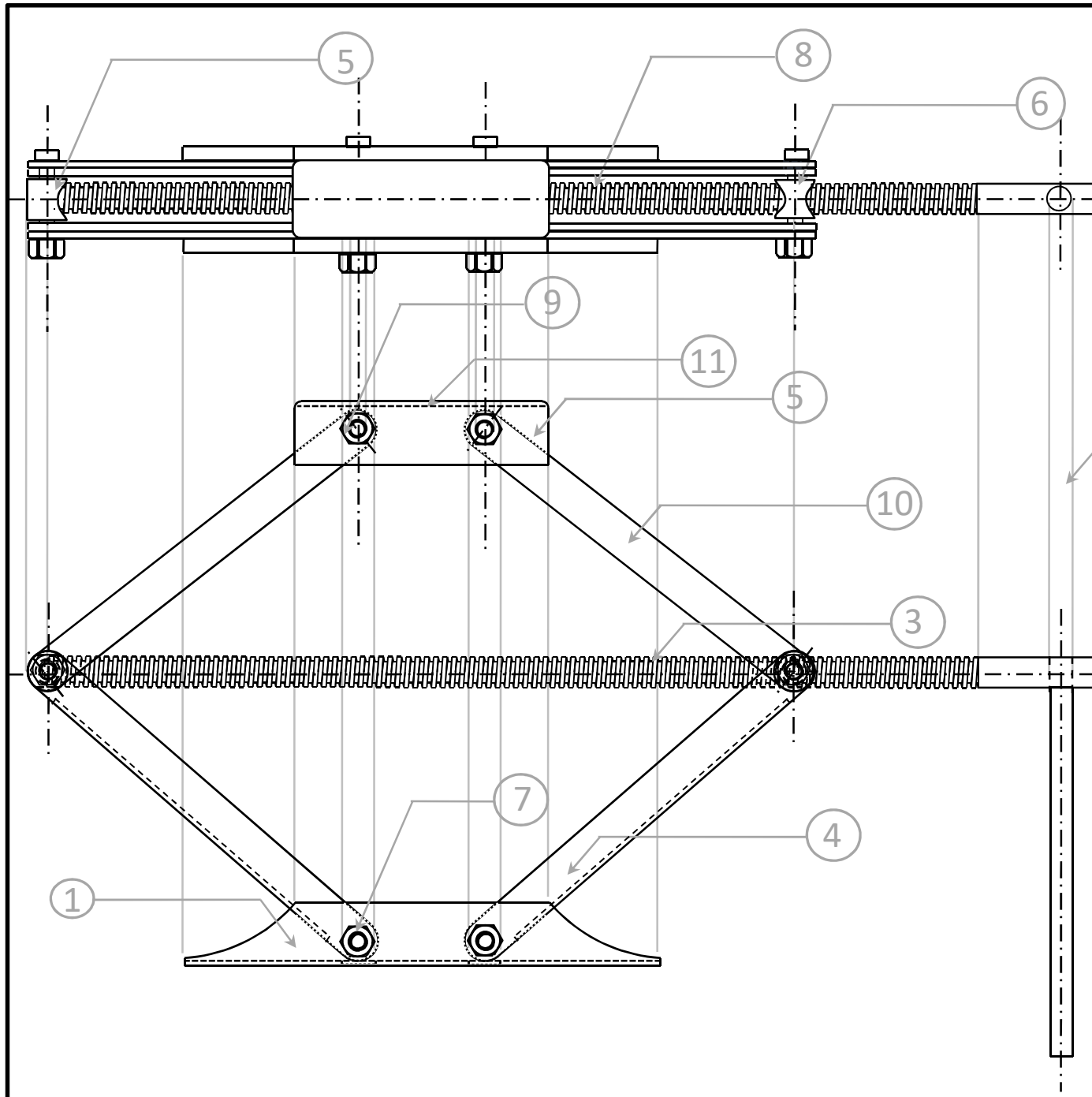
NO	PART	MATL	QTY
1	BASE	1050 STL	1
2	HANDLE	1050 STL	1
3	LEAD SCREW	1050 STL	1
4	LOWER CHANNEL	1050 STL	2
5	SCREW RIGID CONNECTION	1050 STL	1
6	SCREW THROUGH CONNECTION	1050 STL	1
7	STANDARD M10 SCREW 2	MS	2
8	STANDARD M10 SCREW 3	MS	2
9	STANDARD NUT	MS	6
10	UPPER CHANNEL	1050 STL	4
11	UPPER DECK	1050 STL	1

Removal of certain hidden lines in the TOP VIEW adds to further clarity, without compromising on information (which is there in front view, and all there in part drawings).

2

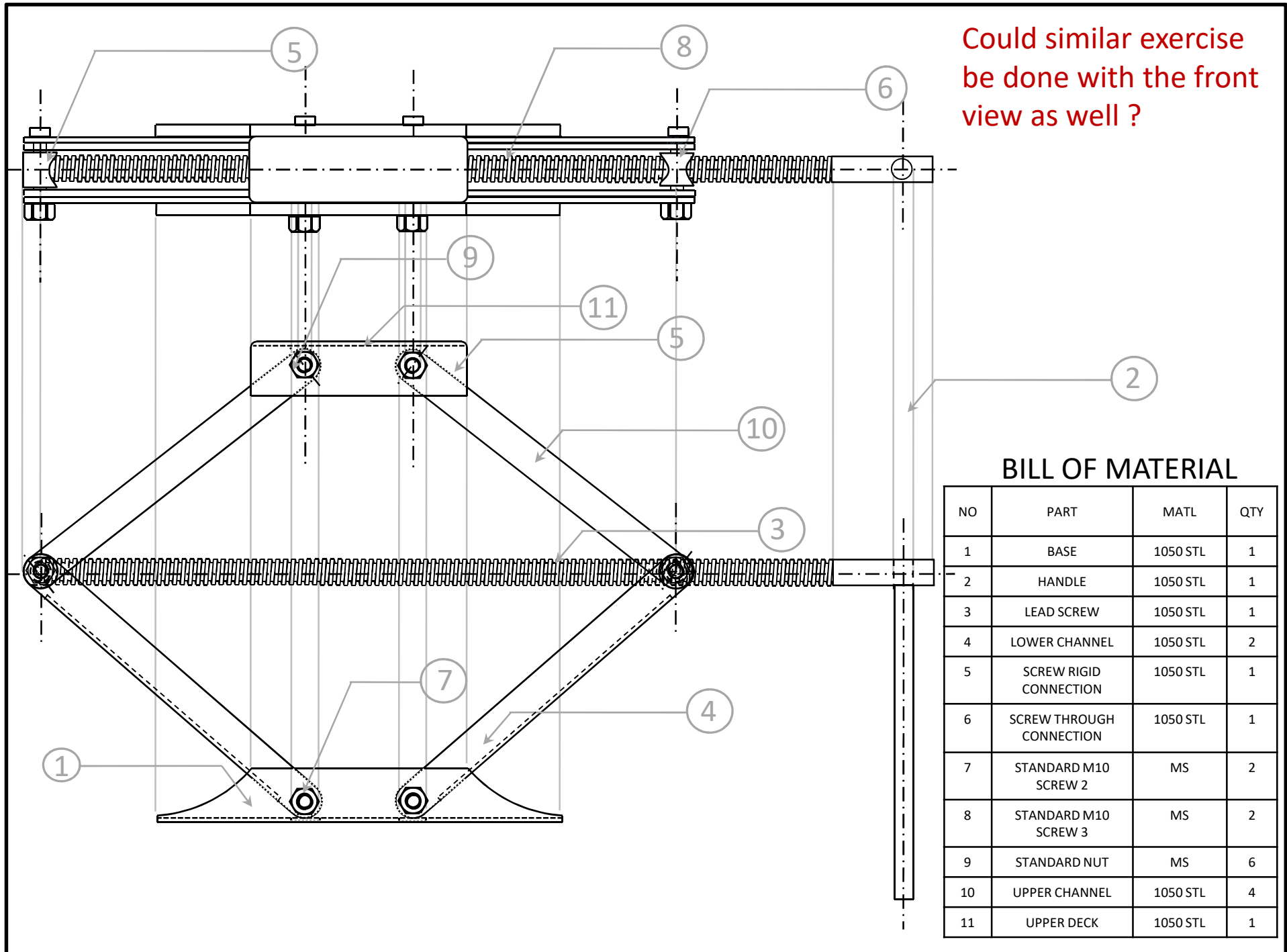
### BILL OF MATERIAL

NO	PART	MATL	QTY
1	BASE	1050 STL	1
2	HANDLE	1050 STL	1
3	LEAD SCREW	1050 STL	1
4	LOWER CHANNEL	1050 STL	2
5	SCREW RIGID CONNECTION	1050 STL	1
6	SCREW THROUGH CONNECTION	1050 STL	1
7	STANDARD M10 SCREW 2	MS	2
8	STANDARD M10 SCREW 3	MS	2
9	STANDARD NUT	MS	6
10	UPPER CHANNEL	1050 STL	4
11	UPPER DECK	1050 STL	1





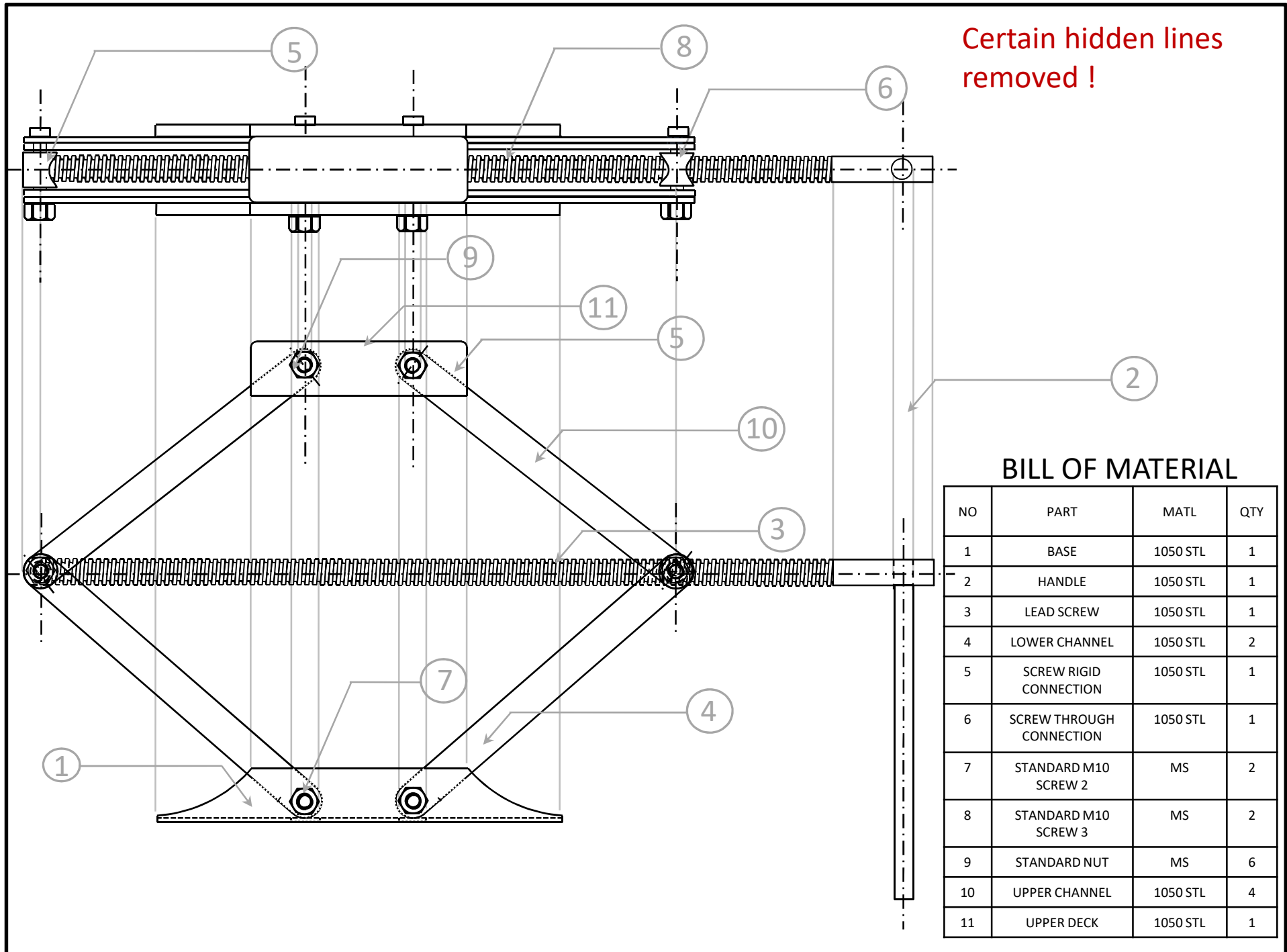
Could similar exercise be done with the front view as well ?



**BILL OF MATERIAL**

NO	PART	MATL	QTY
1	BASE	1050 STL	1
2	HANDLE	1050 STL	1
3	LEAD SCREW	1050 STL	1
4	LOWER CHANNEL	1050 STL	2
5	SCREW RIGID CONNECTION	1050 STL	1
6	SCREW THROUGH CONNECTION	1050 STL	1
7	STANDARD M10 SCREW 2	MS	2
8	STANDARD M10 SCREW 3	MS	2
9	STANDARD NUT	MS	6
10	UPPER CHANNEL	1050 STL	4
11	UPPER DECK	1050 STL	1

Certain hidden lines removed !

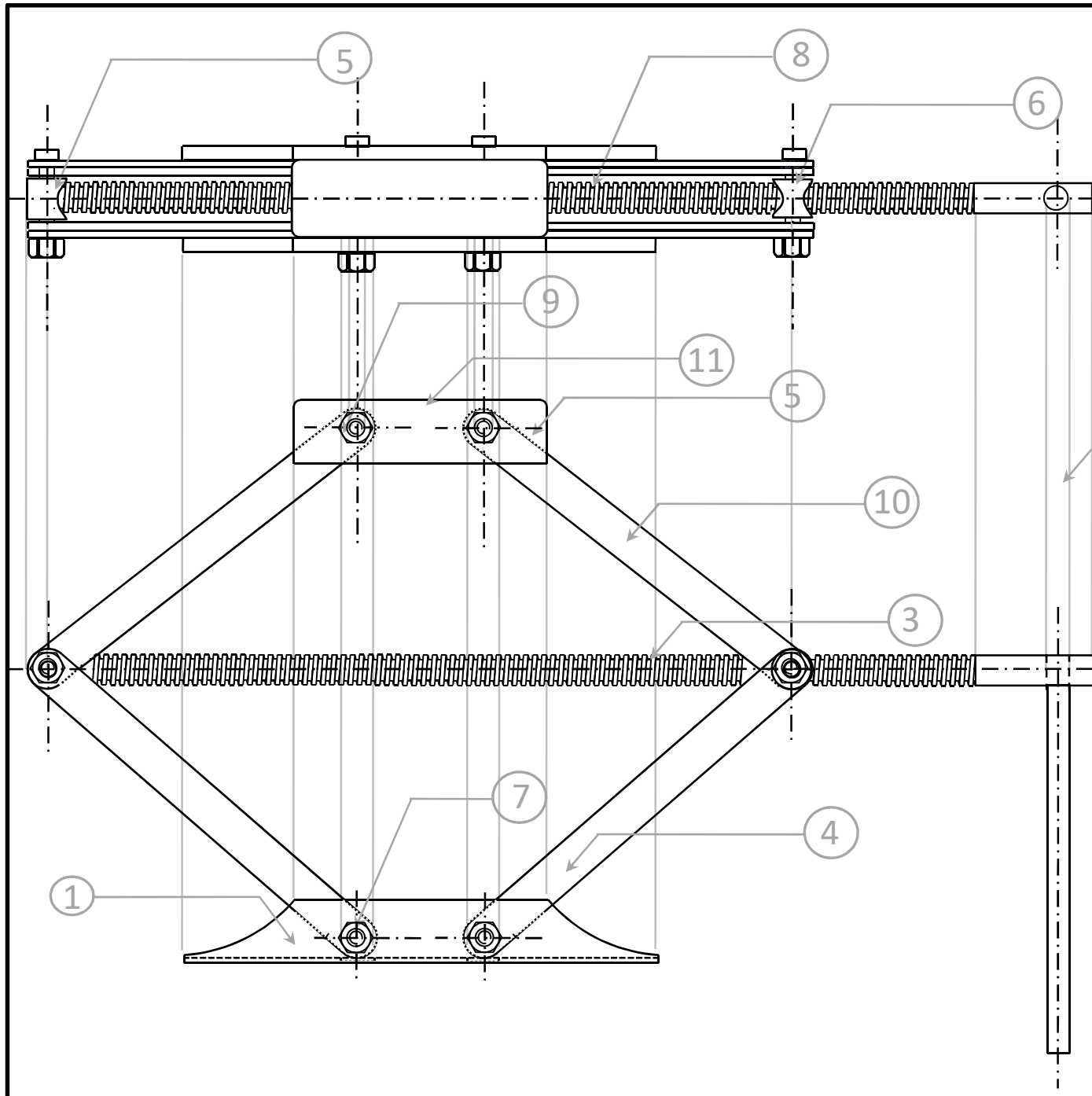


### BILL OF MATERIAL

NO	PART	MATL	QTY
1	BASE	1050 STL	1
2	HANDLE	1050 STL	1
3	LEAD SCREW	1050 STL	1
4	LOWER CHANNEL	1050 STL	2
5	SCREW RIGID CONNECTION	1050 STL	1
6	SCREW THROUGH CONNECTION	1050 STL	1
7	STANDARD M10 SCREW 2	MS	2
8	STANDARD M10 SCREW 3	MS	2
9	STANDARD NUT	MS	6
10	UPPER CHANNEL	1050 STL	4
11	UPPER DECK	1050 STL	1

Portions of the lead screw removed !

Some center lines added/ repositioned !



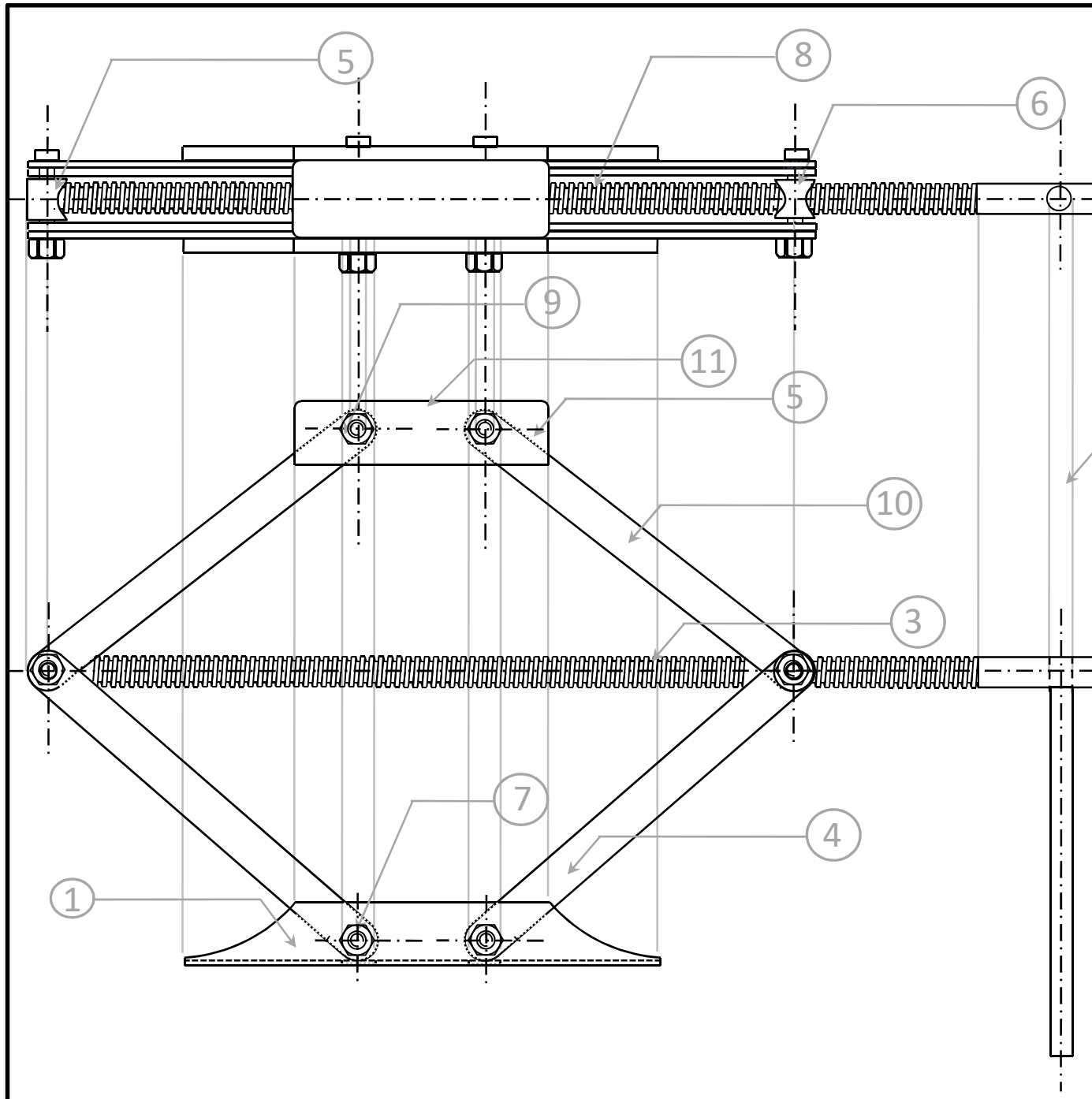
### BILL OF MATERIAL

NO	PART	MATL	QTY
1	BASE	1050 STL	1
2	HANDLE	1050 STL	1
3	LEAD SCREW	1050 STL	1
4	LOWER CHANNEL	1050 STL	2
5	SCREW RIGID CONNECTION	1050 STL	1
6	SCREW THROUGH CONNECTION	1050 STL	1
7	STANDARD M10 SCREW 2	MS	2
8	STANDARD M10 SCREW 3	MS	2
9	STANDARD NUT	MS	6
10	UPPER CHANNEL	1050 STL	4
11	UPPER DECK	1050 STL	1

Clarity improved?

Any important information lost ?

Perhaps! Via the hidden lines removed earlier ...



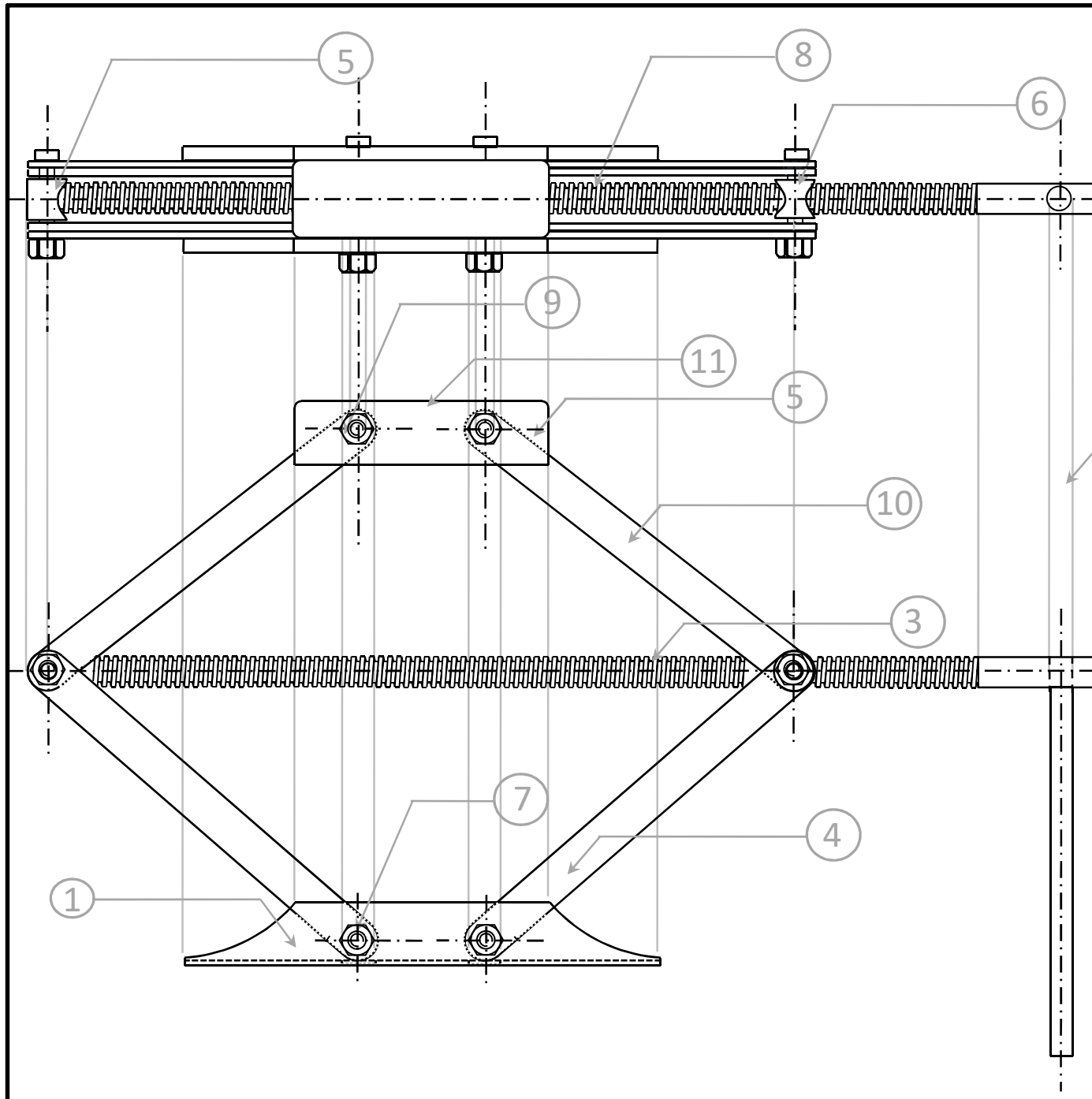
### BILL OF MATERIAL

NO	PART	MATL	QTY
1	BASE	1050 STL	1
2	HANDLE	1050 STL	1
3	LEAD SCREW	1050 STL	1
4	LOWER CHANNEL	1050 STL	2
5	SCREW RIGID CONNECTION	1050 STL	1
6	SCREW THROUGH CONNECTION	1050 STL	1
7	STANDARD M10 SCREW 2	MS	2
8	STANDARD M10 SCREW 3	MS	2
9	STANDARD NUT	MS	6
10	UPPER CHANNEL	1050 STL	4
11	UPPER DECK	1050 STL	1

Clarity improved?

Any important information lost ?

Perhaps! Via the hidden lines removed earlier ...



### BILL OF MATERIAL

NO	PART	MATL	QTY
1	BASE	1050 STL	1
2	HANDLE	1050 STL	1
3	LEAD SCREW	1050 STL	1
4	LOWER CHANNEL	1050 STL	2
5	SCREW RIGID CONNECTION	1050 STL	1
6	SCREW THROUGH CONNECTION	1050 STL	1
7	STANDARD M10 SCREW 2	MS	2
8	STANDARD M10 SCREW 3	MS	2
9	STANDARD NUT	MS	6
10	UPPER CHANNEL	1050 STL	4
11	UPPER DECK	1050 STL	1

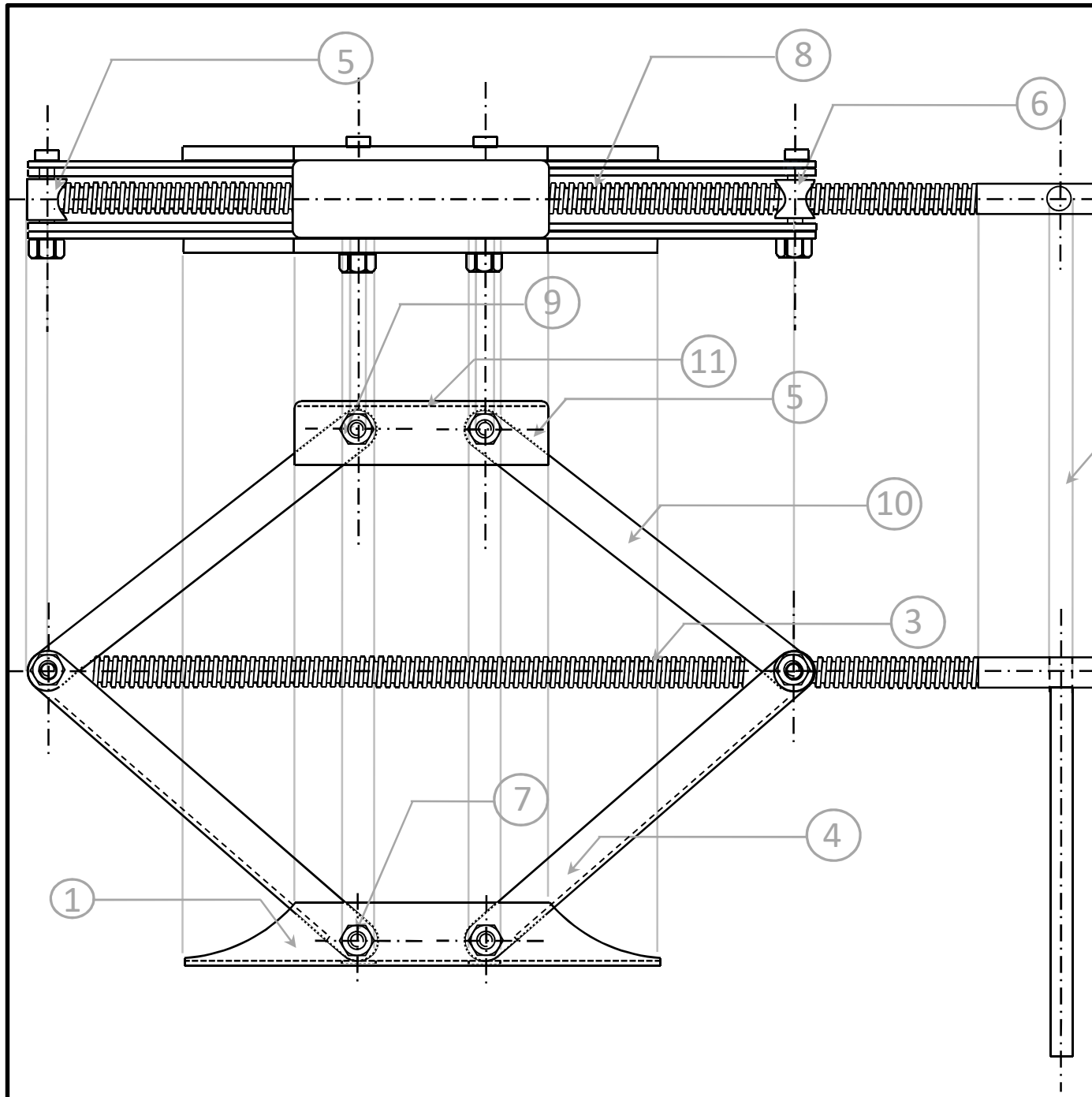
Clarity improved?

Getting them back!

Clarity not compromised !

### BILL OF MATERIAL

NO	PART	MATL	QTY
1	BASE	1050 STL	1
2	HANDLE	1050 STL	1
3	LEAD SCREW	1050 STL	1
4	LOWER CHANNEL	1050 STL	2
5	SCREW RIGID CONNECTION	1050 STL	1
6	SCREW THROUGH CONNECTION	1050 STL	1
7	STANDARD M10 SCREW 2	MS	2
8	STANDARD M10 SCREW 3	MS	2
9	STANDARD NUT	MS	6
10	UPPER CHANNEL	1050 STL	4
11	UPPER DECK	1050 STL	1



Although this exercise seems **subjective**, it may not be actually ... **One could still argue objectively to converge to a nice looking and informative assembly view**

**which will be UNIQUE**

### BILL OF MATERIAL

NO	PART	MATL	QTY
1	BASE	1050 STL	1
2	HANDLE	1050 STL	1
3	LEAD SCREW	1050 STL	1
4	LOWER CHANNEL	1050 STL	2
5	SCREW RIGID CONNECTION	1050 STL	1
6	SCREW THROUGH CONNECTION	1050 STL	1
7	STANDARD M10 SCREW 2	MS	2
8	STANDARD M10 SCREW 3	MS	2
9	STANDARD NUT	MS	6
10	UPPER CHANNEL	1050 STL	4
11	UPPER DECK	1050 STL	1

