



# Terrestrial laser scanning of the Brick Temple at Bhitargaon, Kanpur



- 5<sup>th</sup> Century first Hindu temple in non-perishable material
- Needs 3D model for conservation and archiving



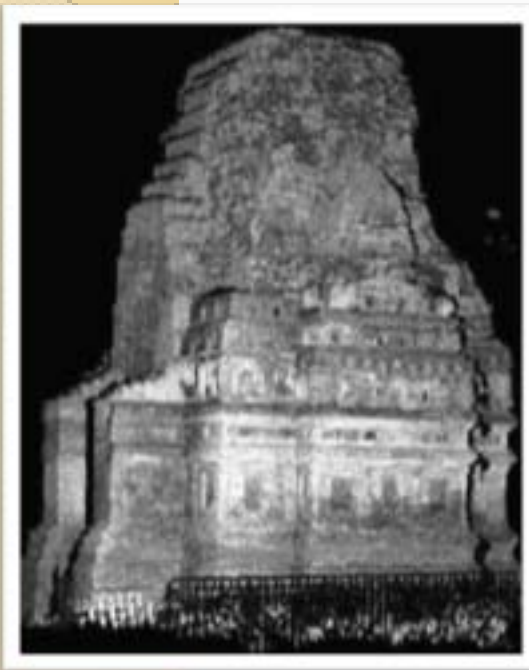
- Instruments used
  - ILRIS3D from Optech (purchased at IIT Kanpur)
  - Nikon 200 camera for texture



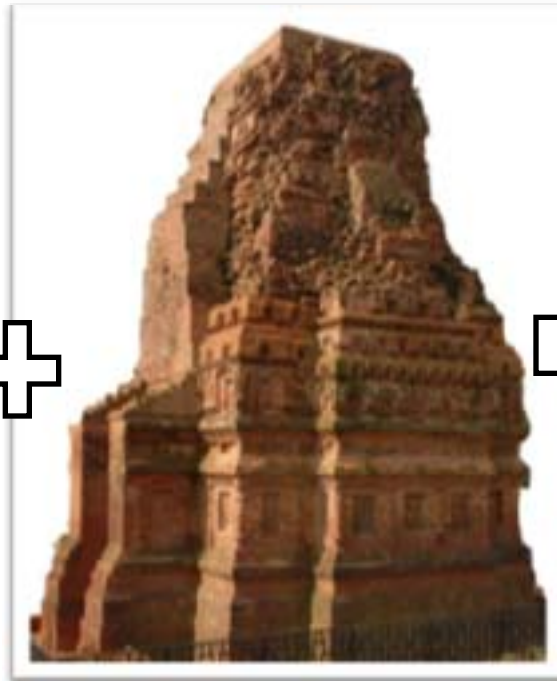
## Scanner Positions in & around Bhitari Gaaon temple



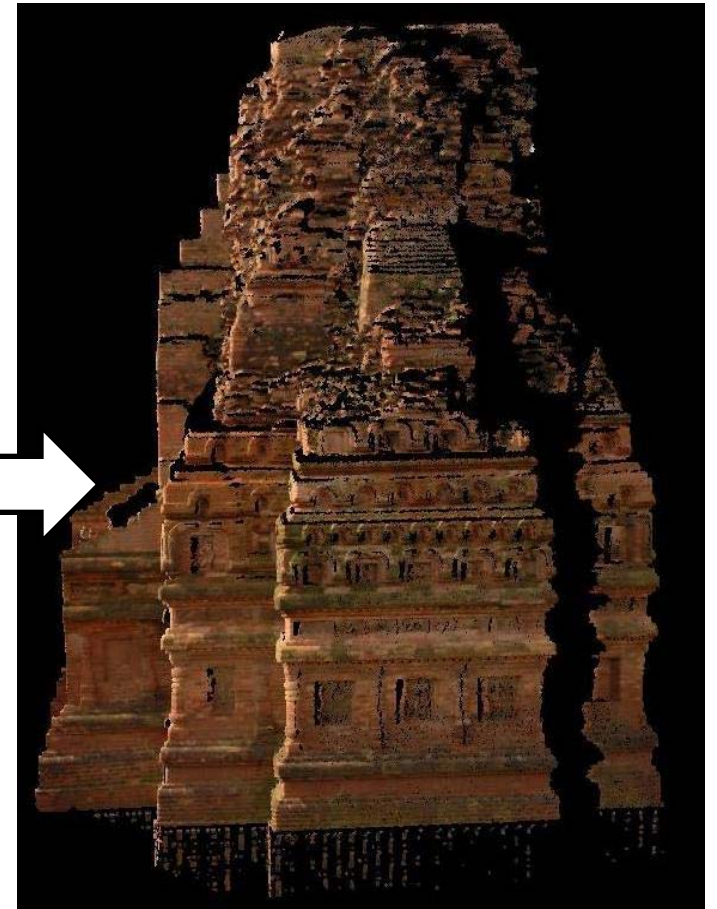
# Texture Rendering



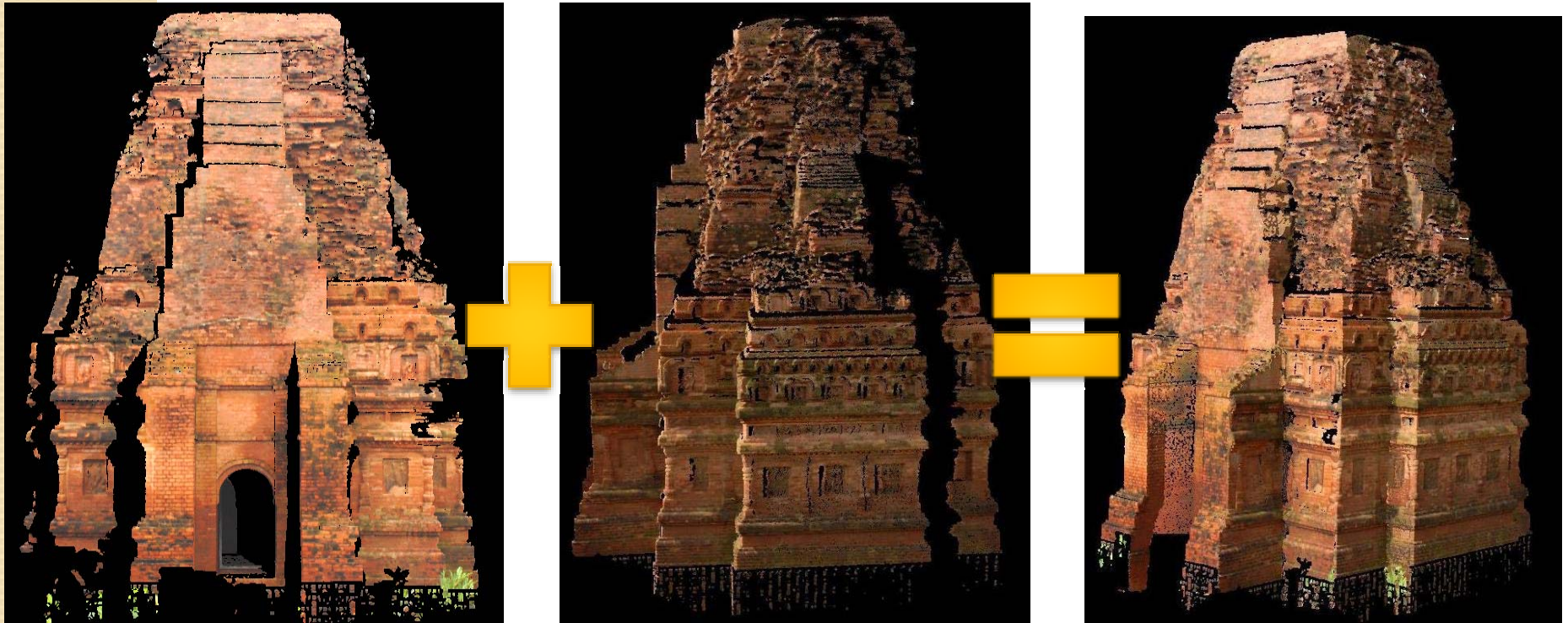
Point cloud



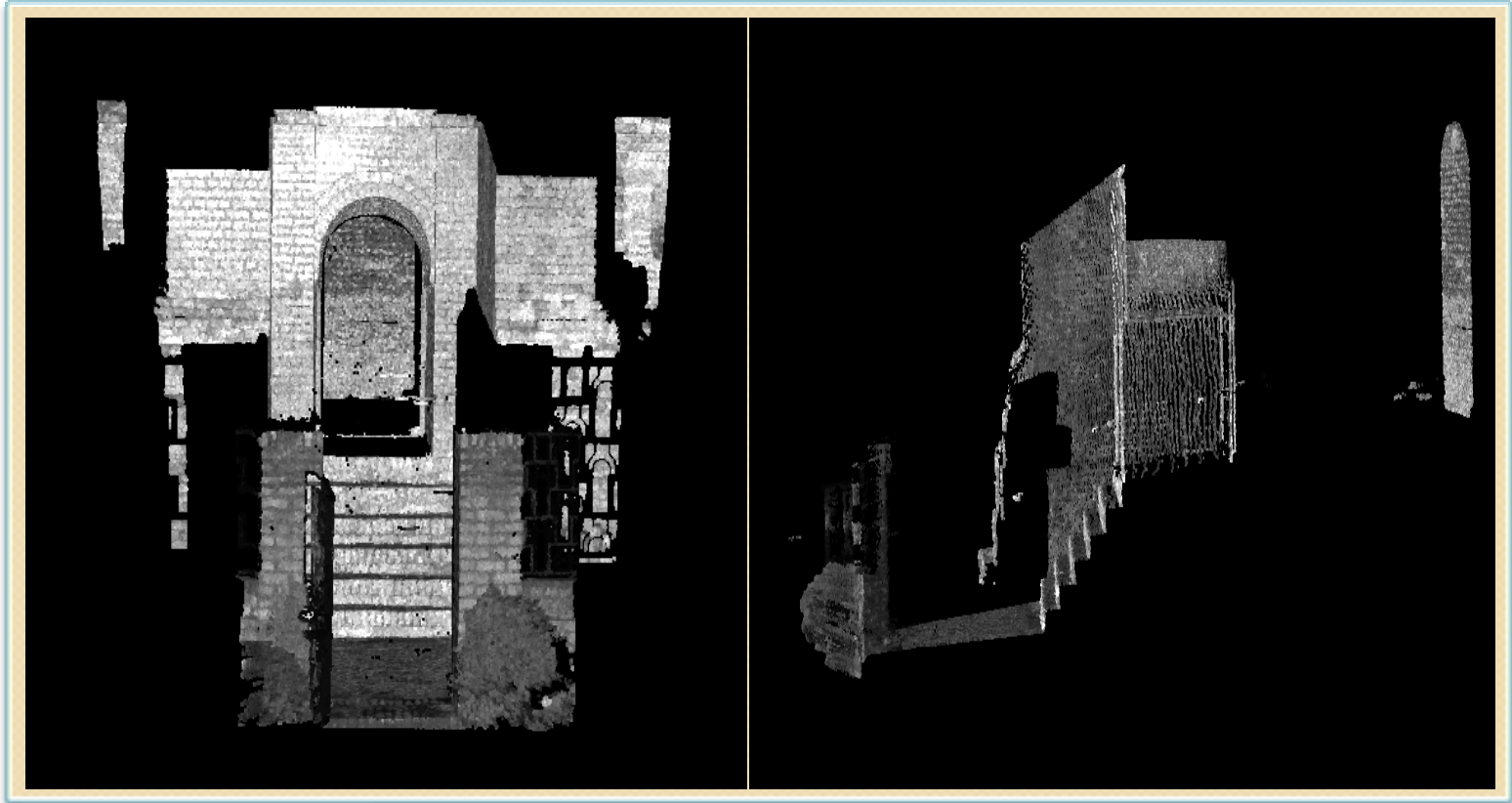
Image



# Combining different scans



# Combining Exterior & Interior Scans

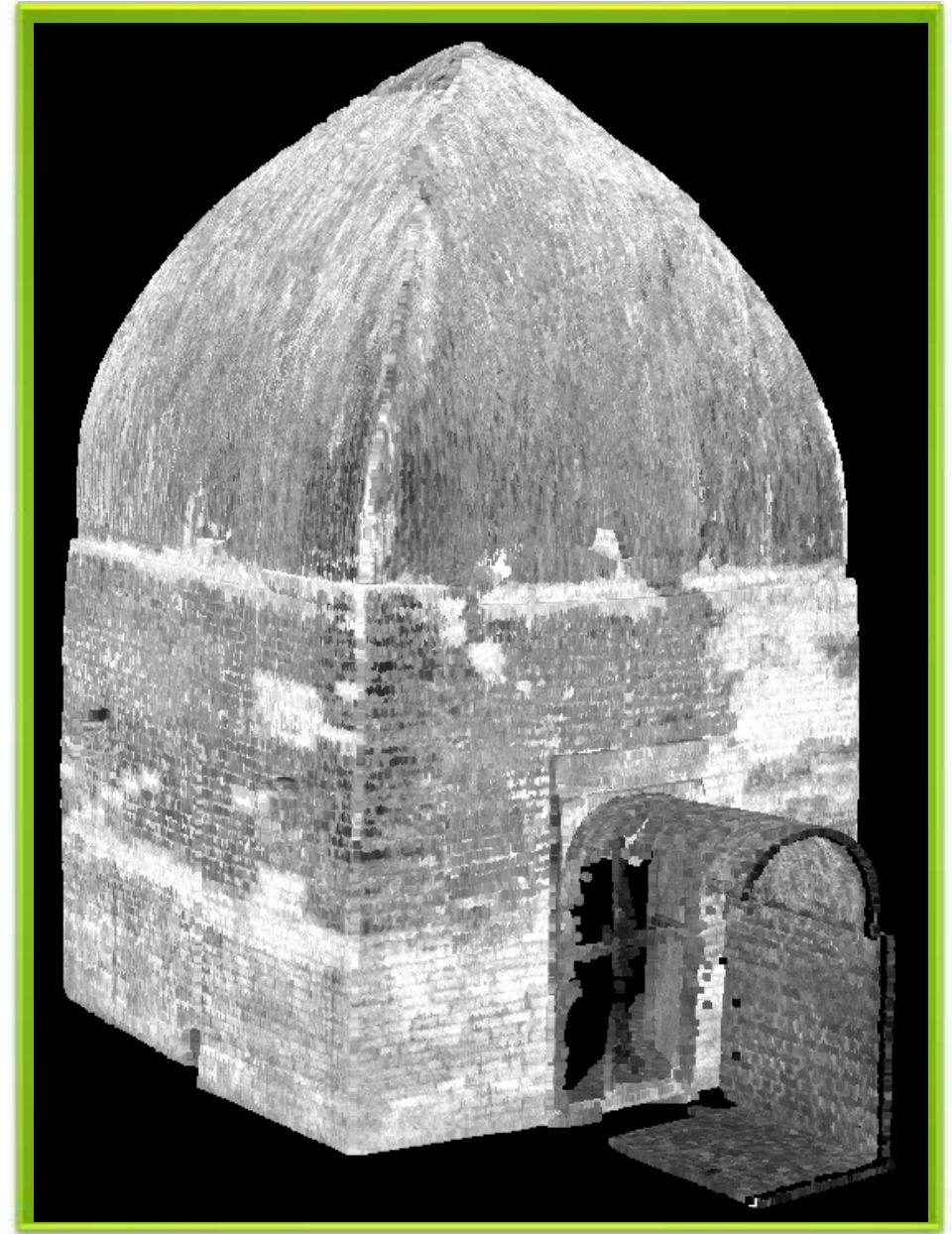


# Scan of Exterior of the temple

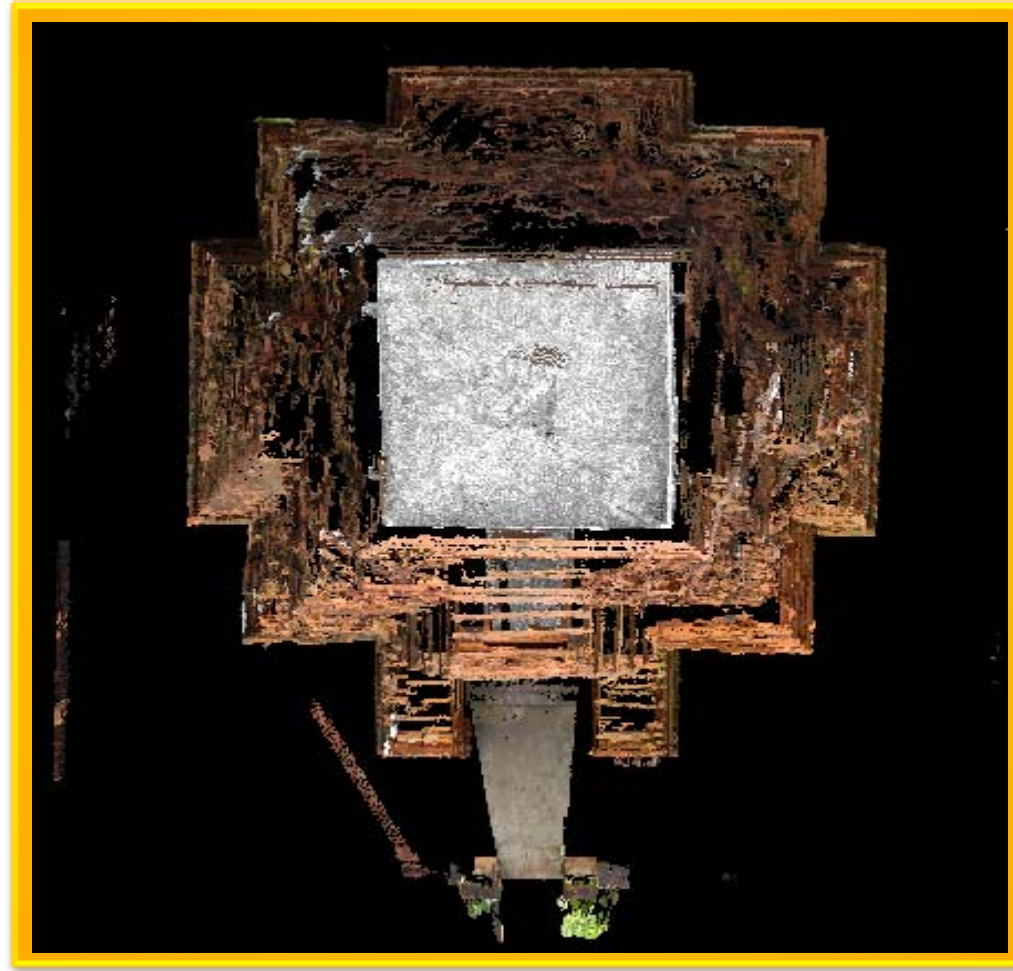




# Scan of interior of the temple



# From the top



# Extraction of cross sections

