




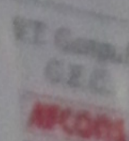
Asiafuge-2012
November 14-16, IIT Bombay, Mumbai, India

and
IIT Bombay
Welcomes you

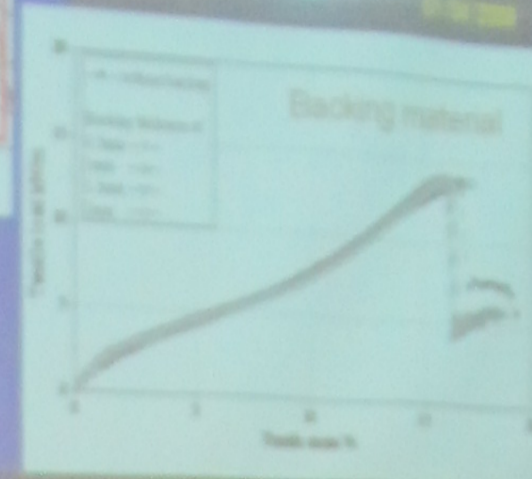
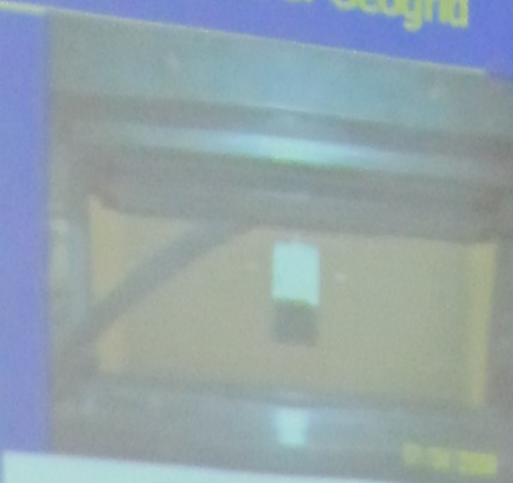
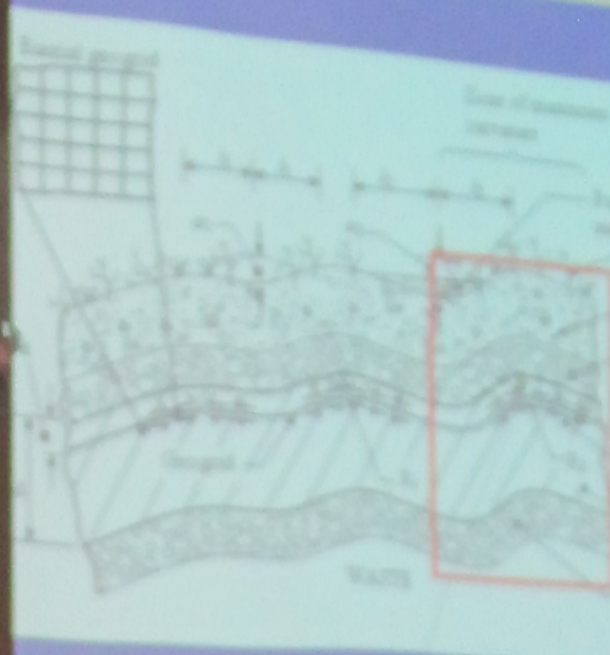
The First Asian Workshop on Physical Modelling in
to
Geotechnics

 **L&T GeoStructure**

Board of
Research in
Nuclear
Sciences (DAE)



Measurement of Mobilised Tensile Load of Geogrid



Mobilised tensile load of
geogrid?

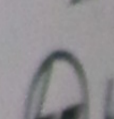


Asiafuge-2012

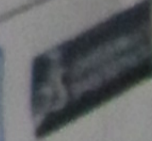
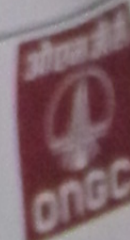
November 14-16, IIT Bombay, Mumbai, India

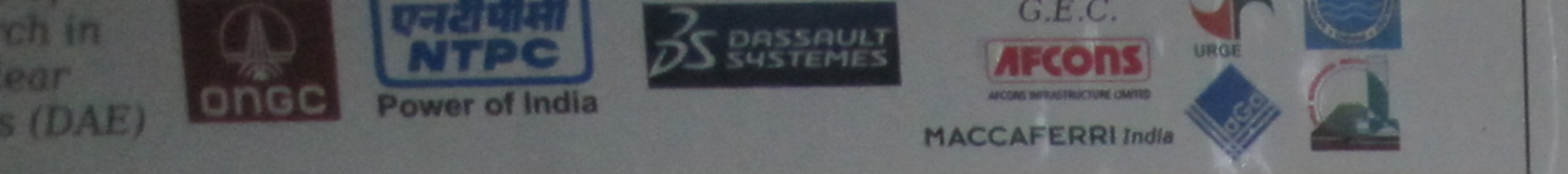
The First Asian Workshop on Physical Modelling in
to
Geotechnics

IIT Bombay

 **L&T GeoStructure**

Board of
Research in
Nuclear
Sciences (DAE)





venerer slopes.

- Geosynthetic reinforcement could very well be utilized in reinforcing the fill material so that global stability can be achieved and post developments works can be started earlier.
- Centrifuge model studies need to be performed to understand the post closure behaviour and effectiveness of geosynthetic reinforcement and use of geosynthetic reinforcement in stability of landfill for improving global stability of landfill.



CHAIR(S)

Asiafuge-2012

IIT Bombay, Mumbai

on Physical Modelling

IIT Bombay

L&T GeoStructure

