

Style template and guidelines for International and INCCOM – 6 Proceedings

Anna A. Author1^a and Barry B. Author2^b

^a Affiliation1, Address, ^b Affiliation2, Address

Abstract

This document shows the desired format and appearance of a manuscript prepared for the Proceedings of the International and INCCOM – 6 Conference on Future trends in Composite Materials and Processing. It is derived from spie.dot (Version 2.6), which is a template for Microsoft Word 2000. It contains general formatting instructions and hints about how to use it. Authors are requested to carefully read the instructions and follow them without exception.

Keywords: Manuscript format, template, INCCOM Proceedings, Microsoft Word

1. Introduction

This document shows the desired format and appearance of a manuscript prepared for the Proceedings of the International and INCCOM – 6, ISAMPE International Conference on Future Trends in Composite Materials and Processing. It is prepared using Microsoft (MS) Word 2000. The font used throughout is Times New Roman. If this font is not available, use a similar serif font. Normal text has a font size of **11 point***. The font attributes for other parts of the document are summarized in Table 1 and are described in the following sections. Normal text should be justified to both the left and right margins.

To be properly presented in the Proceedings, all text and figures must fit inside a rectangle **5-in. wide by 7.00-in. high or 12.5 cm by 17.5 cm. The margins of this template should be 0.75 in. on left, right and top and 1.25 in. at bottom, are set for paper size 6.75 in. by 9.25 in..**

Authors are encouraged to follow the principles of sound technical writing, as found in Ref. 1, for example. Many aspects of technical writing are addressed in the *AIP Style Manual*, published by the American Institute of Physics. It is available on line at <http://www.aip.org/pubservs/style/4thed/toc.html>. Good English usage is essential. A spelling checker is helpful for finding misspelled words.

An author may use this template by substituting his/her own text in each field or by deleting all the text and employing the relevant style from the style list.

2. Parts of Manuscript

This section describes the normal structure of a manuscript and how each part should be handled. The appropriate vertical spacing between various parts of this template is achieved in MS Word by using the required paragraph spacing for each entry in the style list. Care must be exercised in using these styles to obtain the desired format.

*Font sizes are usually specified in points, abbreviated pt, which is a unit of length. One inch = 72 pt.; one cm = 28.4 pt.

^a Corresponding author : e-mail

At times it may be desired, for formatting reasons, to break a line without starting a new paragraph. This situation may occur, for example, when formatting the article title, author information, or section headings. Line breaks are inserted in MS Word (on an IBM PC computer) by simultaneously hitting Shift-Enter.

Table 1. Fonts sizes to be used for various types of text.

All fonts are Times New Roman or an equivalent. Table captions should be centered above the table. When the caption is too long to fit on one line, it should be justified to the right and left margins of the body of the text.

Article title	13 pt., bold, centered
Author names and affiliations	11 pt., normal, centered
Abstract	11 pt., <i>italics</i>, justified
Section heading	11 pt., bold, left justified
Subsection heading	11 pt., bold, left justified
Sub-Subsection heading	11 pt., bold, left justified
Normal text	11 pt., normal
Figure and table caption	11 pt., normal
Footnote text	9 pt., normal

2.1. Title and Author Information

The article title appears centered at the top of the first page. The title font is **13** point, bold. The rules for capitalizing the title are the same as for sentences; only the first word, proper nouns, and acronyms should be capitalized. Avoid using acronyms in the title, unless they are widely understood. Consider the possibility that people outside your area of expertise might read your article. Appendix A contains more about acronyms.

The list of authors immediately follows the title after a blank space. The font is **11** point, normal with each line centered. The authors' affiliations and addresses follow the author list after another blank line, in **11**-point, normal font and centered. Do not use acronyms in affiliations and addresses. Complete author information, such as complete postal address, and web-site location, may be provided at this line itself. For multiple affiliations, each affiliation should appear on a separate line. Italicized superscripts may be used to identify the correspondence between the authors and their respective affiliations. Author for corresponding should be mentioned as a footnote.

When the title or author information is too long to conveniently fit on one line, multiple lines may be used; insert line breaks appropriately to achieve a visually pleasing format. Avoid using a carriage return in these fields because that will introduce excessive space between lines. This MS Word template automatically inserts the correct blank vertical space between the title, author list, and affiliations by specifying space after each field, indicated by the end of paragraph, which is introduced with a carriage return.

2.2. Abstract and Keywords

The title and author information is immediately followed by the Abstract. The Abstract should concisely summarize the key findings of the paper. It should consist of a single paragraph containing no more than 200 words. The Abstract does not have a section number. A list of up to ten keywords should immediately follow the Abstract after a blank line. Abstract should be in *italics* formatted in **11** pt font.

2.3. Body of Paper

The body of the paper consists of numbered sections that present the main findings. These sections should be organized to best present the material. See Sect. 3 for formatting instructions.

2.4. Appendices

Auxiliary material that is best left out of the main body of the paper may be included in the appendices, for example, derivations of equations, proofs of theorems, and details of algorithms. Appendices are enumerated with upper-case Latin letters in alphabetic order.

2.5. Acknowledgments

In the Acknowledgments section, appearing just before the References, the authors may credit others for their guidance or help. Also, funding sources may be stated. The Acknowledgments section does not have a section number.

2.6. References

The References section lists books, articles, and reports that are cited in the paper. This section does not have a section number. The references are numbered in the order in which they are cited. Examples of the format to be followed are given at the end of this template.

For books^{1,2} the listing includes the list of authors, book title (in italics), page or chapter numbers, publisher, city, and year of publication. A reference to a journal article³ includes the author list, title of the article (in quotes), journal name (in italics, properly abbreviated), volume number (in bold), inclusive page numbers, and year. By convention, article titles are capitalized as described in Sect. 2.1. A reference to a proceedings paper or a chapter in an edited book⁴ includes the author list, title of the article (in quotes), conference name (in italics), if appropriate, editors, volume or series title (in italics), volume number (in bold), if applicable, inclusive page numbers, publisher, city, and year.

Citations to the references are made using superscript numerals, as demonstrated in the preceding paragraph. One may also directly refer to a reference within the text, e.g., “as shown in Ref. 3...” Footnotes[†] may be used to provide auxiliary information that doesn’t need to appear in the text, e.g., to explain measurement units. They should be used sparingly, however.

3. Section Formatting

Section headings are left justified and formatted in **11**-point bold font. Sections should be numbered sequentially, starting with the first section after the Abstract. The heading starts with the section number, followed by a period. In MS Word the author must do this numbering.

Paragraphs that immediately follow a section heading are leading paragraphs and should not be indented, according to standard publishing style. The same goes for leading paragraphs of subsections and sub-subsections. Subsequent paragraphs are standard paragraphs, with **11**-pt. indentation. There is a 5-pt. space between all paragraphs. In this MS Word template, this spacing is accomplished by including a 5-pt. space

[†]Footnotes are indicated by symbols to avoid confusion with citations.

after each paragraph. Note that the indentation of a paragraph may be avoided in this MS Word by changing it to a leading paragraph.

3.1. Subsection Attributes

The subsection heading is left justified and set in **11**-point, bold font. Capitalization rules are the same as those for book titles. The first and last words of a subsection heading are capitalized. The remaining words are also capitalized, except for minor words with fewer than four letters, such as articles (a, an, and the), short prepositions (of, at, by, for, in, etc.), and short conjunctions (and, or, as, but, etc.). Subsection numbers consist of the section number, followed by a period, and the subsection number within that section, followed by a period.

3.1.1. Sub-subsection Attributes

The sub-subsection heading is left justified and its font is **11** point, bold. Capitalize as for sentences. The first word of a sub-subsection heading is capitalized. The rest of the heading is not capitalized, except for acronyms and proper names.

4. Figures and Tables

Figures are numbered in the order of their first citation. They should appear in numerical order and on the same page or after their first reference in the text. Alternatively, all figures may be placed at the end of the manuscript, that is, after the Reference section. It is preferable to have figures appear at the top or bottom of the page. Figures, along with their captions, should be separated from the main text by at least 0.2 in. or 5 mm.

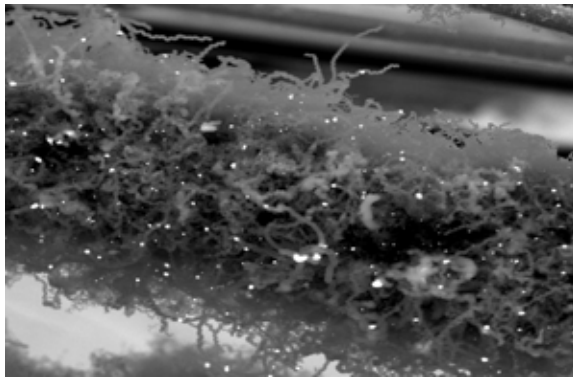


Figure 1. Figure captions are used to label the figure and help the reader understand the figure’s significance. The caption should be centered underneath the figure and set in 12-point font. It is preferable for figures and tables to be placed at the top or bottom of the page.

Figure captions are centered below the figure or graph. Figure captions start with the figure number in **11**-point bold font, followed by a period; the text is in **11**-point normal font; for example, “**Figure 3.** Original image...” See Fig. 1 for an example of a figure caption. When the caption is too long to fit on one line, it should be justified to the right and left margins of the body of the text.

Tables are handled identically to figures, except that their captions appear above the table.

In this MS Word template, the caption style specifies a normal **11**-point font, consistent with the requirement for the caption text. The author needs to make the figure number bold. The author also needs to supply the figure numbers in the order of reference in the body of the paper. The same goes for tables. It is often necessary in MS Word to move figures or tables around to achieve a satisfying appearance.

Authors must ensure that the included figures and images are with proper resolution

Appendix A. Miscellaneous Formatting Details

It is often useful to refer back (or forward) to other sections in the article. Such references are made by section number. When the section reference starts a sentence, Section is spelled out; otherwise use its abbreviation, for example, “In Sect. 2 we showed...” or “Section 2.1 contained a description...”. References to figures, tables, theorems, etc. are handled the same way.

At the first occurrence of an acronym (unless it is widely known such as MTF, CCD, FFT), spell it out, followed by the acronym in parentheses, e.g., noise power spectrum (NPS).

A.1. Formatting Equations

Equations may appear inline with the text, if they are simple, short, and not of major importance; e.g., $\beta = b/r$. Important equations appear on their own line. Such equations are centered. For example, “The expression for minus-log-posterior is

$$\phi = |\mathbf{y} - \mathbf{A} \mathbf{x}|^2 + \alpha \log p(\mathbf{x}) , \quad (1)$$

where α determines the strength of ...” Principal equations are numbered, with the equation number placed within parentheses and right justified.

Equations are considered to be part of a sentence and should be punctuated accordingly. In the above example, a comma appears after the equation because the next line is a subordinate clause. If the equation ends the sentence, a period should follow the equation. The line following an equation should not be indented unless it is meant to start a new paragraph. In this MS Word template, indentation of a standard paragraph is avoided by changing it to a leading paragraph.

References to equations include the equation number in parentheses, for example, “Equation (1) shows...” or “Combining Eqs. (2) and (3), we obtain...”

A.2. Formatting Theorems

To include theorems in a formal way, the theorem identification should appear in a **11**-point, bold font, left justified and followed by a period. The text of the theorem continues on the same line in normal, **11**-point font. For example,

Theorem 1. For any unbiased estimator...

Formal statements of lemmas and algorithms receive a similar treatment.

ACKNOWLEDGMENTS

This unnumbered section is used to identify those people who have aided the authors in understanding or accomplishing the work presented and to acknowledge sources of funding.

REFERENCES

1. A. Eisenberg, *Guide to Technical Editing*, Oxford University, New York, 1992.
2. A. Gelman, J. B. Carlin, H. S. Stern, and D. B. Rubin, *Bayesian Data Analysis*, Chapman and Hall, London, 1995.
3. N. Metropolis, A. W. Rosenbluth, M. N. Rosenbluth, A. H. Teller, and E. Teller, “Equations of state calculations by fast computing machine,” *J. Chem. Phys.* **21**, pp. 1087-1091, 1953.
4. S. F. Gull, “Developments in maximum-entropy data analysis,” in *Maximum Entropy and Bayesian Methods*, J. Skilling, ed., pp. 53-71, Kluwer Academic, Dordrecht, 1989.