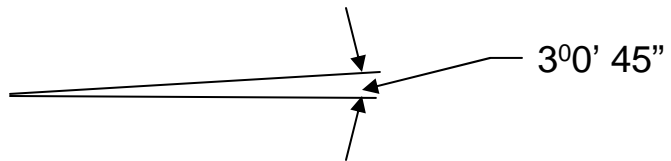
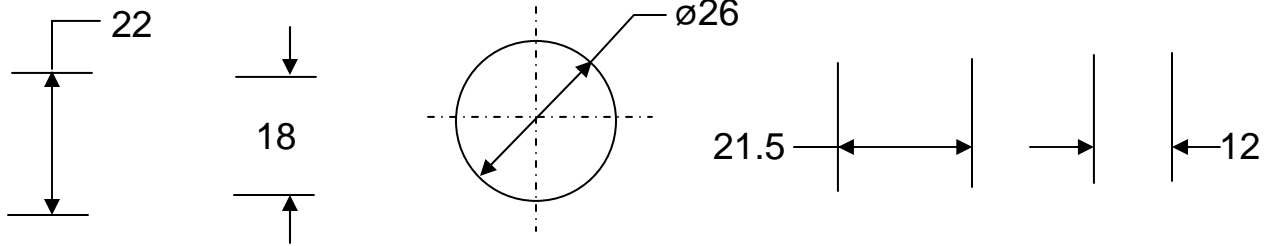
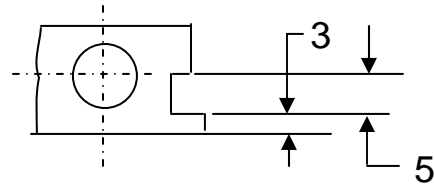
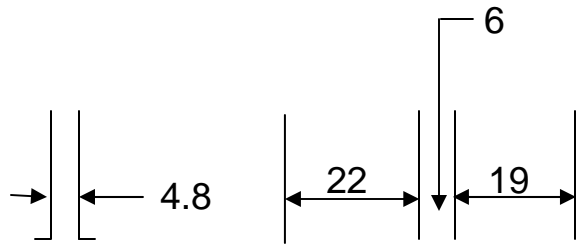


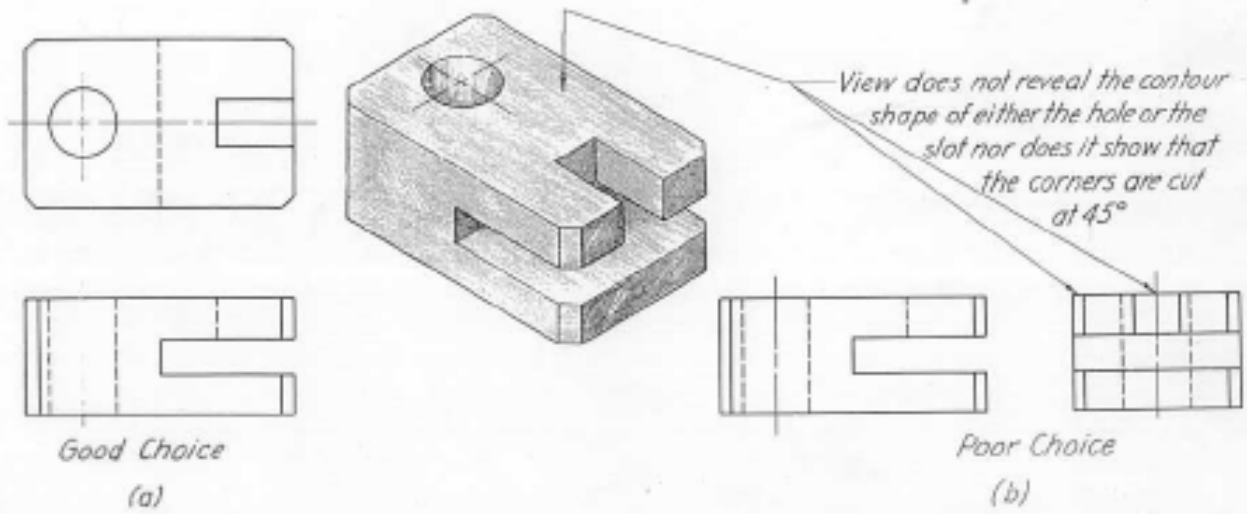
TA 101

Lecture – 5

<http://home.iitk.ac.in/~mukesh/>

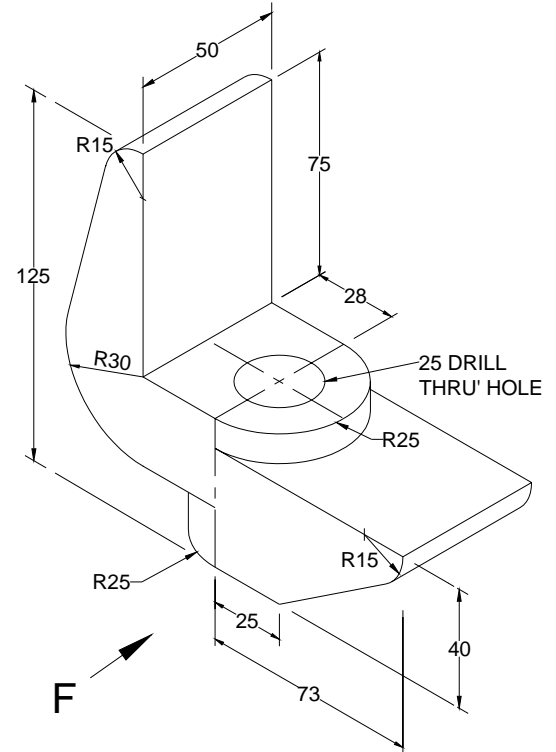
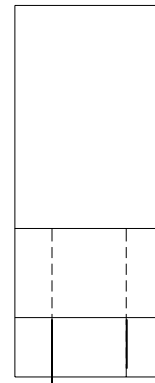
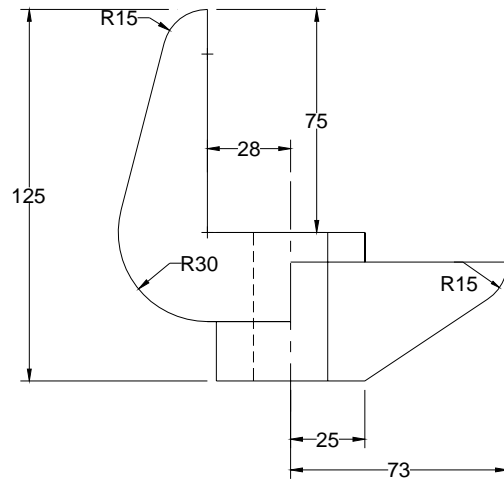
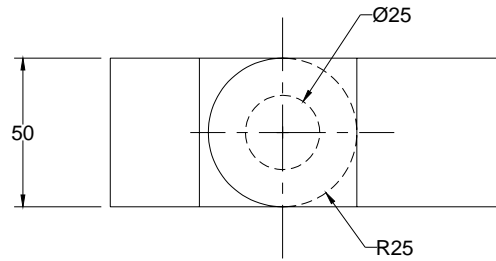


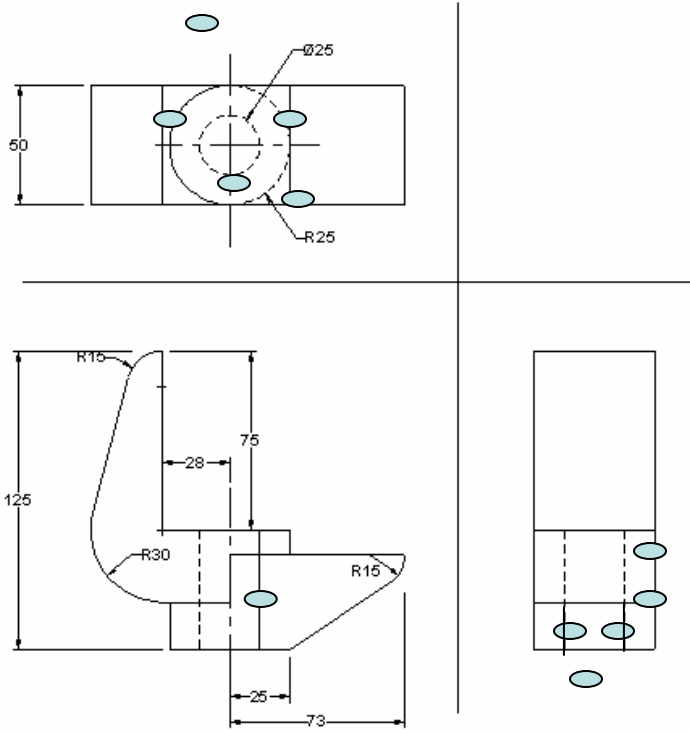
Dimensioning in limited spaces



PROB. 1

Draw the top, front and right side views, in third angle, of the object shown. Use the space provided. Do not dimension. (18)





PROB. 1

Draw the top, front and right side views, in third angle, of the object shown. Use the space provided. Do not dimension. (18)

