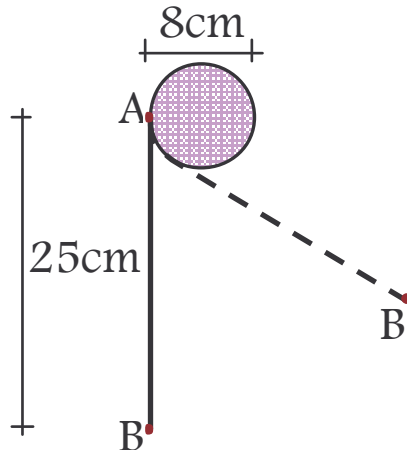

Drawing Class No. 2
Drawing Basics

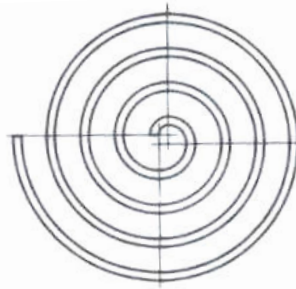
Question 1

Draw the curve traced by Point B at the end of a taut cord winding around a circular cylinder of diameter 8cm. The cord is attached to the cylinder at point A and length of taut cord AB is 25cm.



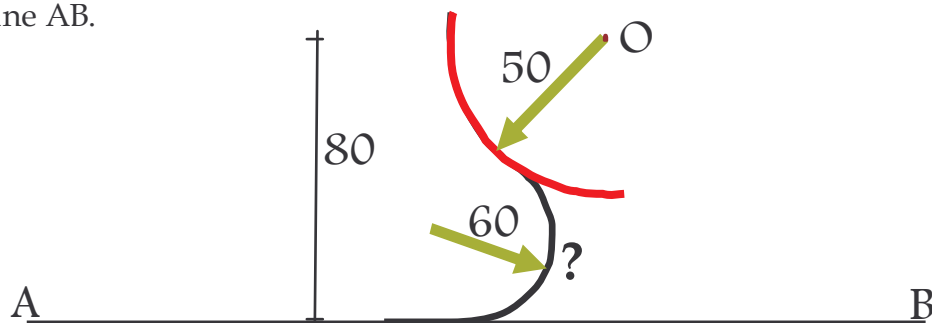
Question 2

Draw a four-centered spiral with 3mm and 6mm radii around a square of 3mm size as shown. Draw the spiral continuously for four turns in each quadrant.



Question 3

A circle is drawn with center at O and radius 50mm. A horizontal line AB is drawn at a distance of 80mm from the point O. Draw an arc of radius 60mm which is tangent to the given circle and line AB.



Question 4

Draw an ellipse having a pair of conjugate diameters 60° apart, one horizontal and 10cm long, the other 8cm long

